

Volume 15 - Issue 1

Established 1965

January 2021

Pukemiro Junction

T H E G L E N A F T O N L I N E



A bush setting view shows the Peckett – here seen from the back of the hill & the cafe (Image E. Baptist)

We have for sale some train calendars for \$20 each. These are the ones that were produced by Railfan magazine & are now combined with NZ Railway & Loco Society. Buy them at the January Open Day or contact secretary@bushtramwayclub.com for more details.

GREETINGS

Welcome to another New Year & another BTC newsletter.

Subs: By now you all should have received a renewal form. We urge all members to renew &, if possible, include a donation – whether for the Heisler fund or general funds. All donations over \$5 are tax deductible.

MEMBERS ZONE

Members may recall that three A.G.M.'s ago Richard E. announced an intention to develop a “Members Zone” as an adjunct to our website. This password protected site would have the scope to show our members relevant information such as previous committee minutes, club rules, old newsletters and so on. It could also develop & have club archives such as collections of photos of the line. John S has recently done a tremendous job setting up a basic structure for the site (*beyond me – Ed!*) and it is now up and running, although it is still at a fairly primitive stage with limited amounts of information. How it develops depends on your enthusiastic support! If the feedback is positive, the sky is the limit!

The site can be accessed via a button on the home page of our website www.bushtramwayclub.com which will take you to a screen asking for your username & password. All members can get a username and password from John S. by sending a request to membership@bushtramwayclub.com.

Richard Ellis, Secretary BTC.

2020 OPEN DAYS

November open day was pretty quiet but December was even quieter.

At the end of our December Open Day, the usual nosh up was held & enjoyed by all who stayed. Thanks to all who brought something to help with the food. There was plenty for everyone.

Thanks to all who turn up & help in any area on our Open Days. We were really short for the December one. A computerised roster system is under development by John S to try to ensure we have staff on the day (or are aware of our shortages).

No steam locos were in steam on the December Open Day but the Peckett was running the bottom half of the line during the November Open Day until we decided it was getting too dry to risk its use beyond about 1.30pm. It had poured with rain the previous couple of days but a wind on the Sunday soon dried the countryside out.

Late on the December Open Day, Meremere diesel 401 broke a spring hanger bolt so it was out of action for the rest of the day. 402 carried on with 1 carriage as our passenger numbers had slowed down by then. Ian B & Dave M found the broken pieces & a spare bolt & sorted the problem out a few days later.

See our website www.bustramwayclub.com or our “The Glen Afton Line” facebook page for more details of our events. All assistance, however small, is very welcome.

CHARTER GROUPS

We had one in mid-November for a vintage car Club from Tauranga - they arrived in a modern bus rather than vintage vehicles.

We have several more booked & a few more enquiries.

CATERING

Marlene has taken over the kitchen on Open Days & a really good job she is making of it, assisted by Sue B, Karleen K & John S.

ALONG THE LINE

Dave M continues to cut the lineside growth, a never ending job. A lot of gorse has sprung up along our line & has needed a good spraying. Dave M has sprayed a lot of our line already, but it is dependent on the weather (wind etc.).

AROUND THE JUNCTION

Old hall: This is very nearly empty. A lot of members have had a hand in this work. We have a person from Huntly who will demolish it for us.

Labour Day Sunday: A good working bee was held on this day. We managed to fit in a safety course. Bruce McL, Pete C & John S completed the framework for the awning in front of the Rec room.

We also managed to get the Westinghouse 5 yearly overhauls & tests on the brakes of the Mines car & car van done. Dave M, Mike A, Geoff B & CJ did this job.

Marlene has been doing some tidying up of the gardens as have Trev T & Rob & Sue B.

WOODWORK SHOP LEAN-TO

The shed behind the woodwork shop has really progressed. The rails were collected, put in place & gauged with tie rods. Rob & Sue B had previously worked out the levels. Ian J got a couple of contractors in to box the area, put down the mesh & then got the concrete in & floated. A very quick job. Ian J has got some concrete blocks for the lower part of the rear wall & hopes to start soon. First, he has to drill some starter rods in to the new floor to hold the blocks in place. Thanks to all who have helped with this project so far. At the end of December open day, while putting away the Mamaku jigger that is stored in the existing part of this shed, the opportunity was taken to drive it right to the end of the track.

Many thanks to the Waikato Railway Society for their \$3000 donation towards the cost of the shed extension.



Progress on the woodwork shop “lean-to” showing the rails in place and posts concreted in (image: I. Jenner)

N.Z.T.A. VISIT

NZTA paid us a visit during our December open day. They seemed reasonably happy with our operation. There are a few recommendations to work on.

WAIKATO UNIVERSITY STUDY

As mentioned in the last newsletter, we are to have the Uni students do a few jobs for us. They visited us recently. They have undertaken to look at three areas of our operation:

- 1/ To track down all our water pipe lines at the Junction. Chris M is looking after this area.
- 2/ To look at the Heisler's framework for cracks & do some cleaning of it. Chris M is also looking after this area.
- 3/ Work out our requirements for the terminus at Glen Afton. Pete C & John S are looking after this area.

The Peckett was in steam that day & looked after by Dave M, Chris M & CJ.

The Glen Afton group were transported to Glen on board Mamaku jigger #1.

AWNING ON THE REC. ROOM CAFE

Bruce McL & helpers have screwed down the Novalite roof. They completed the job at the start of December.

NEW MACHINERY

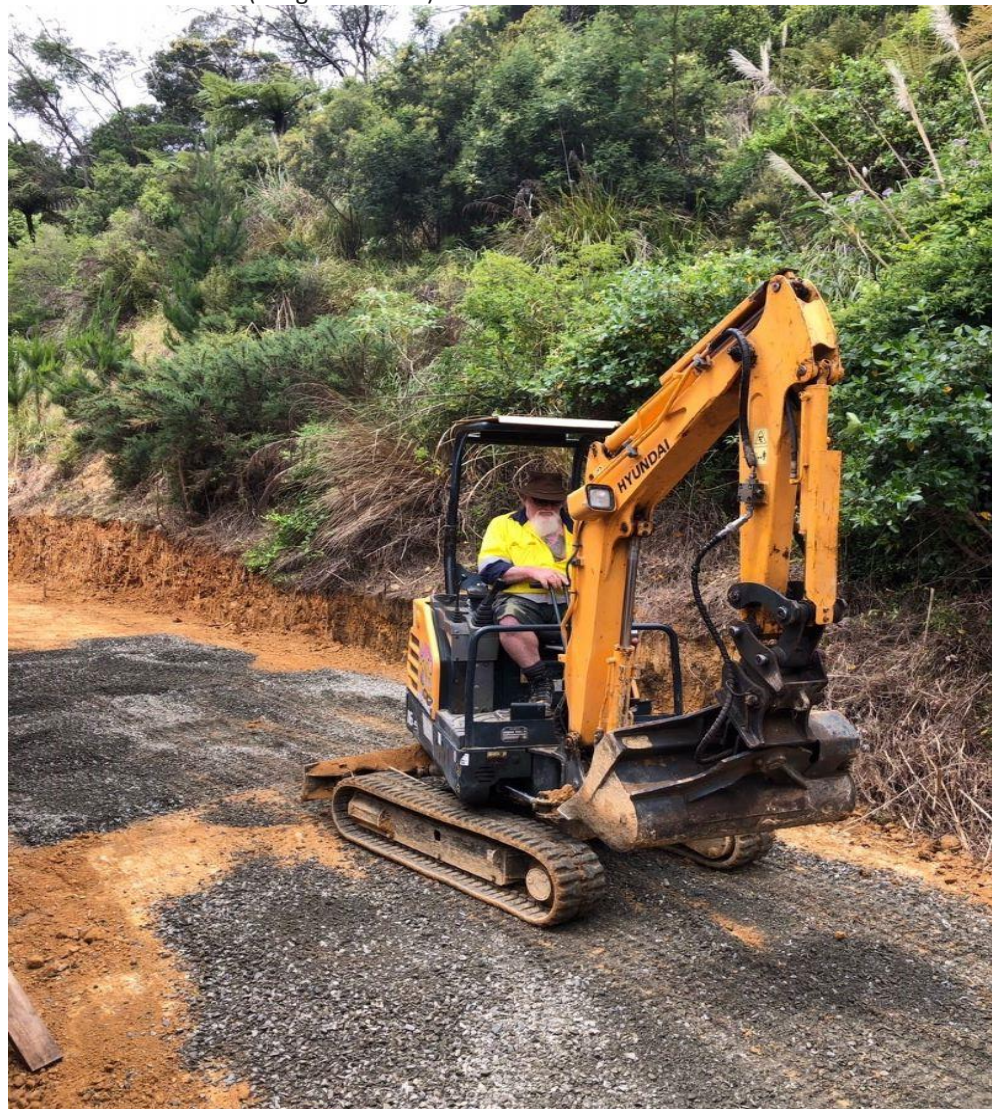
We have recently had donated to BTC a small 1.8 tonne digger & a new loader. The loader is brand new, surely the first time the BTC has ever had something brand new!! Special thanks to the members for these donations.

Ian Jenner comments: The loader is a new front-end loader with a bucket capacity of 0.5CBM. The purchase cost was donated by a member who arranged the purchase & delivery to PJ. Its first use was to cart the bucket full of water to save long walks with small buckets when concreting in the uprights for the woodwork shop shed extension. The loader is much smaller & more flexible than our current old-faithful tractor & should prove useful around the railway.

The excavator is a Hyundai machine, Model R16-9, purchased with money donated by two members. It was owned by local Huntly contractor Red Wootton who used it to excavate for the woodwork shop shed extension. It is a useful small machine which will be used for clearing drains, trackwork & general excavating work around our railway.



The new loader with Marlene as the load! (image: I. Jenner)



The new excavator in action behind the woodwork shop (image: C. Mann)

The loader has already proved its worth spreading metal around the yard & coaling the Peckett. Once these two machines really prove themselves, we hope to dispose of the old tractor.

The digger is second hand but in good order. It will be extremely useful for cleaning out the lineside drains, a badly neglected area of our line. We also hope to be able to use it to help with sleeper replacements.

We are putting together proper training courses for both these vehicles.

LOCOMOTIVES

Steam locos: Late in October, the boiler inspector visited us for 2 jobs. One was to check the Cb in steam & the other was to witness a hydraulic test on the Climax boiler. Both passed. This inspection of the Climax boiler is the climax (!!) of many years of work by Chris M, Richard S & welder Alastair McI.

Peckett: Now out of service for its annual boiler inspection.

Heisler: The boiler has been taken to Wellington for its overhaul. As far as we have heard, Alastair is well on the way with the replacement stays. The necessary steel has been purchased and machined. A carrier from Wellington was looking for a back load & as he is working on the overhaul of the Wellington Manawatu carriage at Silver Stream, he got the job. We hired a truck with a hiab on it to load the boiler onto Clive's truck. Thank to Chris M & Dave M for this work.

Meremere Diesel 402: For quite a long time, it has been dragging the front right hand side as the spring hanger adjusting nut needed attention. This job was recently sorted out by Ian B & Dave M.



Tr 105 (Tr367) has recently had its rear shunter's footplate & cabside repaired (Images: R. Beaumont)

HEISLER 1082 FUND

Donations towards the Heisler overhaul continue to come in. With the \$5000 WEL grant and donations from a handful of members we have exceeded \$8000 in total so far. We recently paid a large bill to Alastair McI for the work done so far so more donations are most welcome. Many thanks to those who have already sent in donations.

To make a donation see our website www.bustramwayclub.com for details.



The Heisler boiler in the process of being lifted from its chassis, prior to being moved south (Photo: C. Mann)

NEW ACCOMODATION

The second weekend of December saw Ian J's new hut brought to the Junction & it is now behind the shanty. Ian & Marlene slept in it that night. Ian says it was very comfortable. It is modelled on an NZR single man's hut.

A massive clean up of that area was also carried out, with some scrap metal & waste material got rid of.



Marlene enjoys the evening scene outside the new hut (Photo: I. Jenner)

Gallery



The Finnish Government hung onto a lot of steam locos for "strategic reasons" in recent decades – member Geoff Tookey sends us this example from a recent trip to Finland.



A

The lean-to flooring is looking good (Image I. Jenner) & the Heisler boiler move is underway (C. Mann)



ERRATA: In the November 2020 newsletter a photo showing a jigger up the line with Waikato Uni students was wrongly credited. The image was in fact taken by Elliot Baptist

This newsletter was produced by Richard Ellis, with most of the text from Colin Jenner and R.E. Photos & text to add variety are still needed. Send your contributions to secretary@bushtramwayclub.com.