

Pukemiro Junction



T H E G L E N A F T O N L I N E

GREETINGS

Page 1

Hi Members, time for another edition of the Club newsletter. One Open Day down for the year already.

SUBSCRIPTIONS

These continue to trickle in. We have had several new members join us since the last newsletter. We welcome you to the club and hope that you will enjoy spending some of your spare time with us. There are quite a few projects on the go at present. Among the new members we have a Carpenter Dave who has already been busy converting the "Rec" room into the new kitchen/café, in addition to work on A1319 for Richard Ellis and work on the Xp wagon. We also have a boiler maker/welder in the ranks now. Mark is keen to get stuck in and has been working on various pieces of rolling stock.

OPEN DAYS

Our first Open Day on April 2nd was busy with 169 Adults and 75 kids carried on our trains. The Mamaku Jigger was also very busy.

We were extremely short of members to help run the Open Day but we just managed to cope with the people we had. Thanks to those members who do come and help on the day.

AGM

This was well attended with 23 members present. The whole of the previous committee was re-elected as no one else wanted to stand. The only issue that had a lot of discussion was the shifting of the station kitchen into the Rec room. (It was decided to trial running the kitchen out of the Rec room for a year—Ed.)



Heave-ho! Fixing the Hangapi Road track slump.(Image: Elliot Baptist)



Around we go! Mamaku Bush Jigger No.1 at Glenbrook Vintage Railway. (Image: E.B.)

SAFETY SESSION

The Safety discussion was held before the AGM, again well attended. The main items for discussion were the changes required as a result of NZTA's assessment of our safety system. These changes have now been implemented.

Locomotives

PECKETT 1630

This was past for its certificate in steam on Tuesday 28th March. Neil finished putting an additional spark arresstor in the smoke box during the April Open Day, so the loco wasn't lit up at all that day.

CB 117

This was lit up to see if there were any problems during the April Open Day. It has yet to be checked in steam by the boiler inspector.

MAMAKU JIGGER # 1

This spent the weekend of 25th & 26th February at Glenbrook Vintage Railway running as part of their Steam and vintage weekend. We are told that there weren't many passengers carried.

DIESEL'S

Elliot has almost completed the annual checks on our diesel locos while Guy has changed the oil on 401.

Rolling Stock

LA WAGON

The big holes and badly rusted areas of the sides were cut out and replaced by our Welding contractor from Huntly. The floor rust is being given the treatment with a heavy hammer to break up the rust. Bruce has been working on replacing the hand brake rest while Dave M. has been wire brushing and under-coating most of the wagon. There are many jobs still to do on this wagon to get it up to a usable standard with more wire brushing and painting to do. The head stock ends are getting worked on at the moment by Mark. There will be a wooden floor fitted to this wagon as well as new gates made for the sides.

Colin J. has completed the annual checks on our carriages and wagons in regular use. These checks are a requirement of our safety scheme.

TRACK WORK

Dave Mann has continued with his scrub cutting battle at various places along our railway and within the Junction yard.

Our local Community Work crews have been back on 4 occasions. On one trip out they replaced a 30ft rail in the cutting just above Campbells crossing. 4 sleepers were also replaced while the rail was out. On another visit they replaced a rail and 9 sleepers in the middle road just above the station plat-

UPCOMING OPEN DAYS

Next Open Days are:

Sunday	4th	June
Sunday	2nd	July

We need as many members as possible to come out and help run the Open Days.

WORKING BEES

See the end of this newsletter for more about our new newsletter notification system.



Fixing the Hangapi Road track slump together.
(Image E.B.)

form. Some drainage work was done and on their last visit they replaced 4 long sleepers under a point at the top end of the junction yard.

The slump at Hangapipi road which resulted from very heavy rain in August last year was caused by a blocked road side drain. The water ran down the road to the level crossing and then down the railway line to the small embankment which when the water got into the soft spot underneath made the track drop down and slightly sideways. We had the problem looked at by the local District Council roading expert who told us they could not help us with our problem at all but would sort out the road side drainage. As of writing this newsletter they still have not done anything about it yet. These drains have been partly tidied up by a Community Work crew so any rainwater did not affect our railway line. This has worked well with the recent heavy rains.

The slump was repaired by us using ballast that we had stockpiled in the bottom terminus area.

Richard S., Russell and Dave M. started the job off and it was completed by a team of 9 members organised by Pete Cairncross. Altogether 5 Yb wagons of ballast were dumped on the affected area and the track lifted and packed.

We have again written to the Waikato District Council but have not yet received a reply.

Around the Junction

We have had the Scrap truck in again and cleaned out about 9 tonnes of scrap metal.

Please note that steel goes into the skips and any aluminium is to be put into the big white bag.

Russell continues to keep the lawns mowed and the gardens tidy. He has spent time maintaining the driveway surface.

Maarten and Lesley helped Russell and Dave cut down some pine trees up at the Glen Afton end of the line. The trees were cut into rings then split for firewood. We have a small quantity of firewood for sale at \$60 a 6x4 trailer load available for collection.

WEATHER

We have had a lot of rain at the Junction since last newsletter. Russell has spent a lot of time bringing gravel from the bottom of the driveway back up to fill in the water tracks.

The first cyclone did no damage to our passenger carrying line but it brought down a slip at Glen Afton. The road through the area however was closed because of a slip that buried the roadway. There was also flooding between the Junction and Hangapipi road with more flooding at Rotowaro by the tin tunnel.

Part of the Jenner's back lawn has slid down towards the railway.

The second cyclone came to us just one week after the first one from Australia but this time from the Pacific. Luckily no damage has occurred with all of the heavy rainfall being taken away easily. There are some areas of drains that will need some attention.

CONDOLENCES

Tony Hinton's Mother passed away towards the end of March



Before/After dropping and spreading ballast. (Image E.B.)



Bit of a slip up at Glen Afton. (Image E.B.)

Teresa Bettison's Father passed away early in April. The Club wishes to extend its sympathy to both families.

GLEN AFTON

Not much to report on our efforts to extend our railway into Glen Afton. Fundraising is in progress.

NEW WORK NOTIFICATION SYSTEM

I have created an 'around the junction' email account with the email address aroundthejunction@gmail.com for interested members to notify each other when they are heading out to the junction for work or play. This should help new members join in and let everyone know more about what's happening and good days to head out.

The procedure is fairly simple. Interested members join up to the scheme and send a quick email to aroundthejunction@gmail.com when they're planning on going out to the junction. Other subscribed members will have the email forwarded to them by aroundthejunction@gmail.com, letting them know what's going on.

Those wanting to signup need only send an email to aroundthejunction@gmail.com asking to join and ideally including a brief introduction. Members already joined and account administrators (Richard Ellis and myself) will see the request.

A confirmation email will be sent a short time later with a link to confirm you wish to receive the messages.

As a precaution, any message to aroundthejunction@gmail.com that includes either of the words "administrator" or "unsubscribe" in either the subject line or the body will only be seen by the administrators.

I think this "around the junction" approach can help us work together as a Club more often, something we need now more than ever if we hope to bring onboard the several skilled new members that have recently joined us.

I hope you'll all join me in using this new system.

So send an email to aroundthejunction@gmail.com today asking to join today!

Elliot Baptist
Club Chairperson

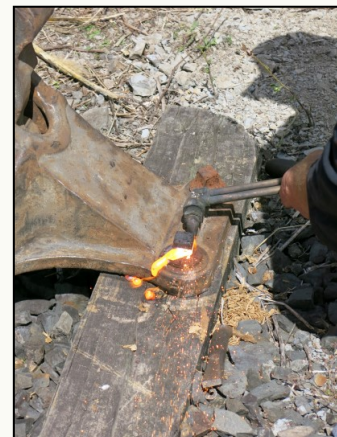


Notices

If you would like to post a notice here, send it through to:
secretary@bushtramwayclub.com



A new, hopefully "theft-proof" points base and lever were also installed while down the line. This image is a particularly rare sight, your editor at work! (Image Guy Coker)



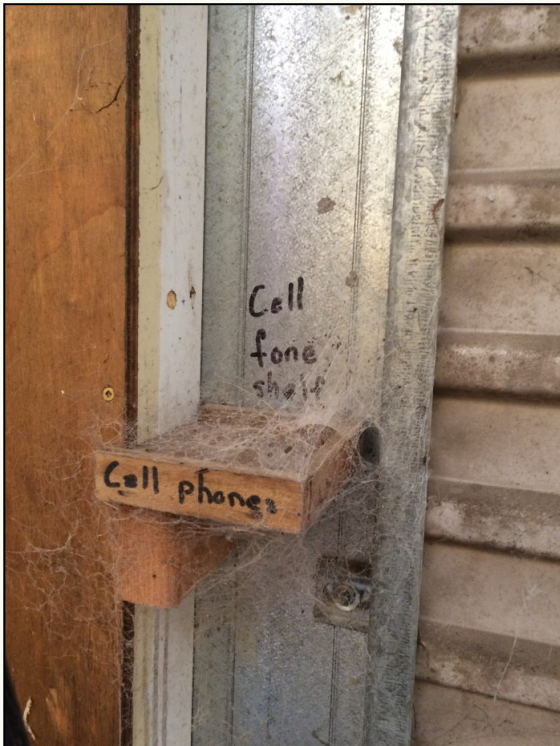
The Gallery



Paint!
Both the Heisler (Left) and the little loco shed in progress (Right) have been painted recently.
(Images E.B.)




A couple more shots from the trip to GVR.
Go Derek go!
(Images E.B.)




Well, no cell phones have been at the junction for a while now according to the spiders...
(Image E.B.)

RAILWAY ENTHUSIAST



1945 onwards (all marks)

Owners' Workshop Manual



the **Bash Mash**

An insight into owning and maintaining a Railway Enthusiast

How's the in-carriage bar coming along Richard? Looks like we've got some maintenance to catch up on. (Image found by Bruce McLuckie)