

Pukemiro Junction



T H E G L E N A F T O N L I N E

GREETINGS

Page 1

Welcome to another newsletter with two months of 2017 already passing by.

SUBSCRIPTIONS

Many thanks to those members that have renewed their subs. A special thanks to those who have included a donation as well.

OPEN DAYS

Our first Open Day for 2017 is on 2nd April followed by 7th May. We would like to see as many members as possible come and assist us on these days as several members who normally turn up will be away.

It is planned to have a quick talk to all Open Day staff at 9.45am about how the day will be run. This is a new initiative as part of an improvement in our communications with staff on the day.

ANNUAL GENERAL MEETING

Notices have been sent out for this AGM. It is being held on Sunday 26th March at 1 pm. It is important that as many members as possible turn up and share their views on how the Club should be run and come forward with ideas and suggestions.

This is also the opportunity for you to stand for election to the committee should you so desire.

As is usual the morning will be dedicated to bringing members up to date with changes to our safety system as a result of our 2016 NZTA annual assessment.

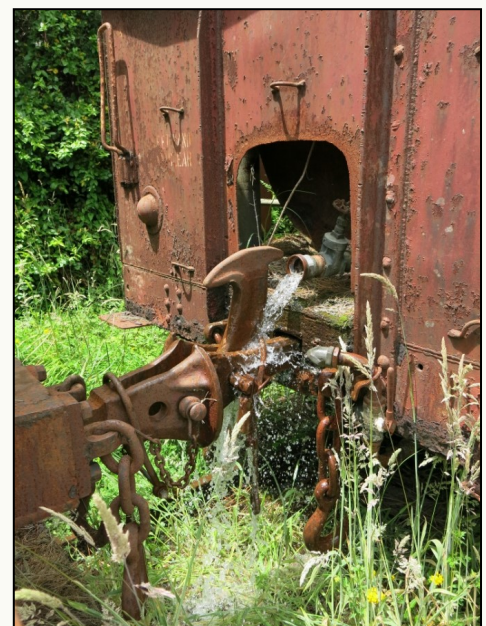
AGM NOTICE

Sunday 26th March at 1pm

After the morning Safety Update



Sun shining on a junction at rest (Image: Elliot Baptist)



A tank with a small hole in the top can collect a lot of water over 30 years (Image: E.B.)



First running of Mamaku Jigger #2 (Image Ian Jenner)

LOCOMOTIVES

The Peckett and Cb are both undergoing their annual boiler surveys. Those involved have been Richard S., Chris M., Dave M. and Peter C.

MAMAKU JIGGERS

Jigger #1 was taken from the Junction on Sunday 29/1 back to Ian’s warehouse for a spruce up before it goes to Glenbrook Vintage Railway for a Steam and Vintage weekend being held on 25th and 26th of February.

Good progress has been made on Jigger #2. Thursday 26/1 was an important day in the overhaul as the engine was started and the jigger driven approximately 250 metres in each direction on timber rails. This is the first time it has run under its own power in over 30 years. A new bonnet has been made and is currently away being painted.

CAR A1319

Richard E. has been over for a further two weeks recently. Work has mainly concentrated on completing the interior woodwork and work has also been done on the outside ends of the air brake pipe ends. Several leaks in the airbrake system were sorted out.

Those helping Richard have been Russell, Dave, Rob, Sue and Bob.

TRACKWORK

Dave M. has been scrub cutting lineside growth beside the back shunt at the top end of the station yard.

LA WAGON

To provide a better form of transporting our Community work teams around our railway, we have decided to overhaul an La wagon. The wagon has had a large tank in it for about 30 years and was intended to be a part of a fire fighting train. This train never happened although it was nearly completed so the wagon has never been used on our railway since it was obtained in the late 70’s. It has sat quietly rusting in the back of rotten row most of this time. The wagon was dragged out and a start made on cutting away the platforms and railings, The tank was cut loose and lifted out on Sunday 29/1. The intention is to patch the bad areas of rusted side panels and build a roof over it. BBQ style tables will be fitted as seating. This wagon could also be used on Open Days. If you would like to assist with this project let Colin or Bruce know. Involvement so far has come from Bruce M., Dave M., Russell, Maarten and Colin J.

UPCOMING WORKING BEES

No more “Working Bees” as we used to know and ignore. Plans are afoot for organising Working Bees as needed to complete a specific task and a centralised method of notifying and organising interested members. The details are still being worked out, stay tuned. –Elliot

Some examples of things to do if you are out at the junction are:

- Patching up the paint of the Mines Car, loco shed, Meremere diesels, etc.
- Washing down large sign at bottom of drive with bleach to kill the stuff growing on it.



Jigger #2 in all its glory (Image I.J.)



The La tank wagon in state (Image E.B.)



La wagon sans-rubbish (Image Bruce McLuckie)

AROUND THE JUNCTION

Russell continues to keep the grounds around the station environs in immaculate condition and has been planting out more plants. Russell works hard to keep up with this job and at the same time offering his assistance elsewhere as needed.

Work on converting the kitchen area of the “Rec room” into a café kitchen for our Open Days continues. Dave the joiner has been doing this work for us.

Maarten is keeping busy with all sorts of small jobs around the junction, There is now a small trailer for Russell to tow behind the ride on mower.

Dave M. has been chopping up a lot of old hardwood sleepers (poor old chainsaw) for firewood. Most of these are the original sleepers we replaced after we took the line over.

There has been a steady flow of MCA campers visiting over the summer.

As you have read in this newsletter, not a lot has happened over the Summer at the Junction as there have not been many members visiting us. Come on out for the day and enjoy the Summer weather with us.

NATIONAL RAIL EVENTS

Steam Scene of Christchurch advises that they are holding a “Steam Extravaganza” on the weekend of 8/9 April 2017. If you are in the Christchurch area at this time, this will be well worth going to see. They are located at 621 McLeans Island road at the rear of the airport.

As mentioned earlier The Glenbrook Vintage Railway are holding a “Steam and Vintage Country Festival” on the weekend of 25th and 26th Feb.

A COMPANION LOST

On a very sad note it is with regret that we must report the passing of Russell’s trusty companion Zenna. After a brief illness she passed away on Thursday 2nd February. She has been laid to rest in garden at the Junction where she has lived with Russell for the last five years. We who knew her always enjoyed her company while staying at the Junction and she loved our Possum hunting nights.



She will be missed (Image B.M.)

-CJ

The Gallery

History information signs have been put up in the loco shed to inform visitors about what in the world it is they are looking at and its history.

They’ve got magnets on back to hold them to the locos while parked. Please put them at eye-height next to the cab door on the side facing into the shed.

They’ve also got a hole punched in the top for easy hanging on a nail when you want to use a loco. I’ve put eye-height pink-marked nails on both sides of nearly every central support post in the shed for this purpose.

Let either myself or Richard Ellis know of any errors you may find. -Elliot



TRANS-AUSTRALIAN RAILWAY

Your editor recently took a 4352 km/4 day journey of many landscapes across Australia from Sydney to Perth on the Indian Pacific, a 1400 ton, 0.77 km/30 car long, transcontinental train. As this is a rather short newsletter I thought I'd share with you some images I took along the way! -Elliot

Notices

If you would like to post a notice here, send it through to:
secretary@bushtramwayclub.com

