

Pukemiro Junction



T H E B U S H T R A M W A Y C L U B I N C .

GREETINGS

Page 1

Welcome to another newsletter with ¾ of the year already gone.

MEMBERSHIPS

Welcome to our new members, we hope you will enjoy joining in on our activities.

OPEN DAYS

September Open Day was pretty good passenger wise with October being very similar. We are finding that our early trains are full but our passengers really taper off from about 1.30pm.

Thanks to all those that come out and make these days a success.

During our October Open Day the Mamaku jigger ran nine trips which is a record.

*The only time I ever enjoyed ironing
was the day I accidentally got
gin in the steam iron.
—Phyllis Diller*

Notice

YEARLY DO
The end of year / 50th Anniversary Do is now a bring-a-dessert roast dinner at 4:30 pm on the December Open Day. The roast, supporting salads and other accompaniments are being supplied by the club for current financial members, just bring a dessert!



Action on two long awaited projects. The clearing of the Glenn Afton 'terminus' (Image: Elliot Baptist) and work on the Heisler as reported last newsletter (Image: David Mann)



Passengers later on the October Open Day (DM)

50TH ANNIVERSARY LUNCH

Unfortunately this had to be cancelled because of a lack of members who had paid up. Several had indicated that they were going but had not paid up.

CHARTER TRIPS



Farewell whistles and a farewell toot (EB)

We had a very large charter for the Motor Caravan Assoc. with approximately 150 passengers spread over three trips. They also had lunch at the Junction.

On Sunday the 11th October we had 33 railfan visitors from Australia pay us a visit. They spent most of the morning with us and did not seem to be in a hurry to leave. Their visit included lunch at the Junction. We have also had one Kindy along for a ride.

Thanks to all those who turn up and help with these trips.

TRACKWORK

A very large amount of trackwork has been done recently both by Club members and CW crews.

Late in the day of our September Open Day, we had

UPCOMING OPEN DAYS

Our next Open Days will be on:

Sunday 6th December

Special 50th Anniversary Open Day. Featuring Mayoral visit, piper and bring-a-dessert roast dinner (dinner provided).

It will also mark 100 years since the first coal train left Pukemiro Junction. Many members are coming in period costume as coal miners, bush-men and such. Why not join in!

We always need as many members as possible to come and help out on these days.

UPCOMING WORKING BEES

These are held on the Sunday of the 4th full weekend of the month and are very important in keeping our railway running. The next ones are:

Sunday 22nd November
Sunday 27th December
Sunday 24th January

Please come along as there is always plenty to do.

Some minimal skill barrier examples are:

- Clearing regrowth and dumped rubbish at Glenn Afton terminus
- Cleaning the Tr for repainting
- Pruning the lineside bushes and branches
- Sprucing up the station



The visiting Australian railfans taking an interested look at the Mamaku Jigger motor. (EB)

a derailment. That afternoon and during the next week 75 metres of track on a curve were regauged and some sleepers marked for replacement. Some of these sleepers have been replaced by a CW crew.

Ian Bettison has carried out his six monthly inspection, particularly checking for over gauge areas. He found two which have since been repaired and a few have been marked for replacement.

Thanks to those members who have helped with the trackwork.

Just after the visit by our Australian friends a cracked rail was found. It was replaced in 1½ hours that day.

Locomotives

L 5 0 7

We have been fortunate in that we were able to extend the loan to include October, so it was in use during our October Open Day and during the visit by our Australian rail fans. It will be returning to MOTAT soon. During it's time with us it has clocked up approximately 180 kilometres.

We owe a very big thank you to the Museum of Transport and Technology for the loan of L507. Maybe it will come back in years to come.



The L and Heisler together, hopefully in steam together next time. We'll see. (DM)

T R 2 1 7

The injector pump has been overhauled by the father of one of our contractors. Mike started the engine and reckoned it hadn't run as well for a long time.

Rolling stock

X P 4 7 4

Derek and Gail continue with this wagon project. Derek was noticed recently cutting up some timber to attach to the framework.

A 1 3 1 9

By the time you receive this newsletter Richard Ellis will have been back again and perhaps returned home.

During his last visit he, Dave and Russell concentrated on getting the windows and surrounding woodwork sorted out and painted. By the time he went home, all the windows were glazed, painted and in place. Dave has continued painting as the weather permits.



Thanks to the work of many, A1319 is looking glazed and shiny. Russel and Dave seem particularly happy about it here. (DM?)

Projects

WATER TANK STAND

Bruce has been working on the new tank stand to go on the foundations of the original tank at the Junc-

tion. He has been successful in obtaining a grant from the Lion Foundation of \$4700 to complete the job.

NEW WATER TANK



Water water (got you there! -Ed.), we're going to need it if we get more steamers in operation. (EB)

We have had to purchase a new 5000gal water tank as the old fibreglass one was leaking at the outlet. It had already been repaired in that area once before many years ago. The old tank was taken off the hill and put up by the firewood heap. The new tank was rolled up the hill by a C/W crew and now awaits plumbing into the system.

TRACTOR

We have recently purchased two new rear tyres for our tractor, probably the first new ones on it since it was new many, many years ago. We have only ever fitted second hand ones, usually well-worn ones at that.

Around the Junction

FIREWOOD

Very nearly all the trees that were cut down have now been split and stacked with the rest of the split firewood.

We have this firewood for sale at \$60 for a 6x4 trailer. Be in and stock up for next winter.

STATION AREA

What a lovely sight this area is at present with all the flowers of various kinds in bloom. Russell took advantage of the supply of mulch and spread it around the various gardens. -CJ

Notices

FIREWOOD

Firewood for sale at \$60 for a 6x4 trailer. Be in and stock up for next winter.

DIESEL DRIVERS

Recently we 've been a bit short of the kind of drivers that keep our passenger trains running. If you're interested in driving, let me know and we'll see what we can do. -Elliot

If you would like to post a notice here, for example asking for helpers to paint a loco or any spare corrugated iron for shed repairs, etc. send it through to:

secretary@bushtramwayclub.com

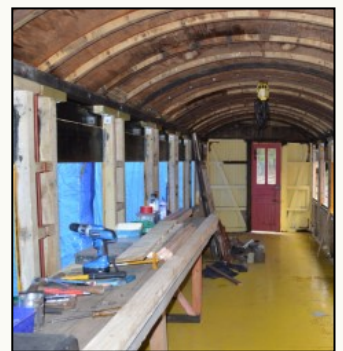


Now we have pictures: Chainsaws can apparently make wood rather hot, enough to burn in this case! Thanks again to Tim Hinton & his helper (as well as our lads) for bringing down the pines the other month and Ron of Huntly Hire for donating the use of the wood splitter. (DM)

The Gallery



Thanks to the council and their scrub cutters, the Glenn Afton end of the line has been cleared, a massive job. This has revealed the pond that is our future railway. It'll take quite some work to get proper drainage in and prepare the area for a platform. Anyone have a digger lying around? (EB)

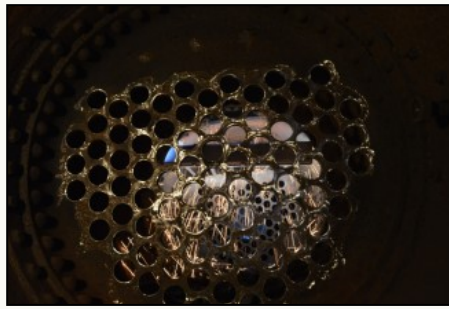


It's been 'plane sailing' (top left) on A1319 with many helpful hands from Beaumont's to Webb's working on it (nearly A to Z). Another example of a successful team project. The carriage was even converted into a mobile workshop (top right). Still work to be done such as on the bulkheads (bottom right) but good progress is being made! (DM) (EB)





Acrobatics with Johnny from Wanganui



Girder stays with Johnny from Wanganui



Trackwork loco again (EB)

Images: DM unless stated



Photoshoot in progress?



All problems need at least 5 people to solve

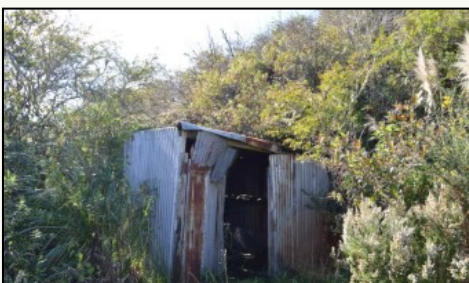


Big spanner solves unknown sized problem



Time for a sun tan (EB)

Cleaning with Pete, a fun guy to meet, it's always a treat, to see his smile.



Quiz: Where is this hut?

Answer: The land time forgot.



steam and smoke at your service (EB)

IMAGES :

Thanks to David Mann for his contribution of images to this newsletter. Please send any potential newsletter images to: secretary@bushtramwayclub.com

Also thanks to MOTAT for the loan of L507 (depicted above)