

Pukemiro Junction



Voice from the Bush

PUKEMIRO JUNCTION

T H E B U S H T R A M W A Y C L U B I N C .

GREETINGS

The weather around the Junction continues to be rather wet but at last temperatures are rising.

OPEN DAYS

The September open day was another good one with October open day just slightly down (passenger wise).

The days were made interesting with the Mamaku jigger and battery electric loco both in service carrying passengers.

Thanks to all who turn up and make these days a success.

After lunch on the October open day, our passengers just vanished. Did they all go home to watch the end of the Bathurst car race?

December 2nd. We hope to have this as our usual Santa day. After the last trip we will be having our usual end of the year nosh up so please bring your salads, desserts etc. to add to the feed.

**My computer beat
me at checkers, but
I sure beat it at
kickboxing.**

Emo Philips

(Continued on page 2)



IN THIS ISSUE

• Greetings..... 1	• Coal Wagon..... 2	• Hut Renovations3
• Open Days 1	• Peckett 1630..... 2	• Annual Assessment.....3
• Upcoming Dates..... 2	• Climax 1650.....2,3	• Sleepers3
• Caretaker 2	• #3 Car..... 3	• Air Compressor.....3
• Trackwork.....2	• N Wagon 3	• Car Park.....3
• Grants2	• Pukemiro Pickings3	• The Photo Gallery4

UPCOMING OPEN DAYS

The next ones are:

November 4th
December 2nd

Please turn up and help with these days.

UPCOMING WORKING BEES

These are held on the Sunday of the 4th full weekend of the month and are very important in keeping our railway running. There are always jobs to do. The next ones are:

November 25th
December 23rd
January 27th

CARETAKER

Russell continues to do good work around the Junction, largely clearing years of gorse, bracken and blackberry, as well as planting young trees – all marked with sticks. He also gives a helping hand where required.

TRACKWORK

Another couple of days work have been put in by our CW crews. One day was spent replacing long point sleepers under the point in 'rotten row'. The old ones were looking like Weet-bix, well soaked in water.

Part of another day was spent extending the track toward Glen Afton.

Ian B, helped by Teresa, has carried out the six-monthly track inspection. He has picked up a few things that need doing. Some were done by CJ, and himself a week or so later.

GRANTS

We have been fortunate to obtain the following grants:

Lion Foundation, the grant towards the Peckett overhaul has been extended until March 2013

Pub Charity, we have received \$4171 to replace the floor in our Lc wagon that is used as our mobile coal store.

Trust Waikato, we have received \$1500 towards a shed and siding planned to go behind the woodwork workshop.

We owe a great deal of thanks to these sponsors for these grants, they mean we can make good progress.

COAL WAGON

Thanks to the generous grant from Pub Charity, the overhaul of this wagon is well underway. We obtained a quote from a local engineer to replace the badly rusted out floor in this wagon.

As I write this, the sides are off the wagon and all the old floor has been removed.

The grant also includes cleaning the wagon and painting it. Since starting this newsletter, a lot of work has been done. Approx. ½ days welding is still required to complete this side of the job.

A very wet Saturday meant we had an inside job for our CW crew, so they spent the day scraping, sanding and then painting the wagon with a rust kill undercoat.

PECKETT 1630

Not a lot of progress on this since last newsletter.

Last visit Peter painted the spark arresting funnel with high heat black paint and John completed the steam pipework in the cab to the air compressor.

Chris was working on the steam supply to the steam brake.

Chris also spent a day trying to sort out the problem with the side rods.

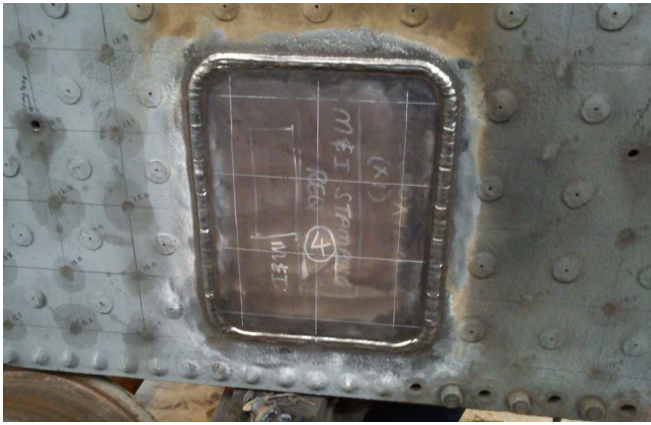
CLIMAX 1650

A lot of work has been carried out on the boiler. So far the welder has welded on 3 out of 4 patches in the firebox and a new firebox tubeplate. The welder comes from Wellington and has visited us twice so far, once for two days and the other time for 5 days. He will be back in three weeks.

During the welding, an NDT check must be carried out of the welds at least twice, then a visit by the boiler inspector must also be fitted in.

Chris tells me that one side of the underframe has been pulled

(Continued on page 3)



apart by the contractor overhauling the bogies and mainframe.

3 CAR

Robin continues to work away on this car. The work lately has been mainly cutting packers to ensure that the windows will slide up and down evenly.

N WAGON



This wagon was obtained during the mid 80's and used, with a tank on it, for weed spraying our line. Our source of weed killer dried up when the carbo works closed and has anguished in our 'rotten row' ever since. It was intended to be overhauled as a runner wagon for our hand crane but this never happened.

It has now been swapped with Silverstream Railway in Wellington for a couple of jigger gearboxes, complete with clutches.

PUKEMIRO PICKINGS

Gail and Derek spent a large part of a day oiling our points. Gail and Robin planted some trees down the bank between the firewood shed and the trap points.

Robin has spent some time fitting a stainless steel tray to the front of the urinal in the men's toilet at the station.

HUT RENOVATIONS

Work on this continues in fits and starts. Chris has spent some time working on the roof of the new porch. A good working bee during October Open Day saw about 8 painting sheets of plywood that are slowly replacing the old cladding.



ANNUAL ASSESSMENT

Most of the outstanding items from our annual assessment have now been tidied up.

Our two carriages now sport number plates, the first time in untold years.



SLEEPERS

We recently took delivery of 100 new 6 x 6 treated pine sleepers. Most are for the extension towards Glen Afton and the rest are for replacements on our present main line or other repairs as needed.

AIR COMPRESSOR

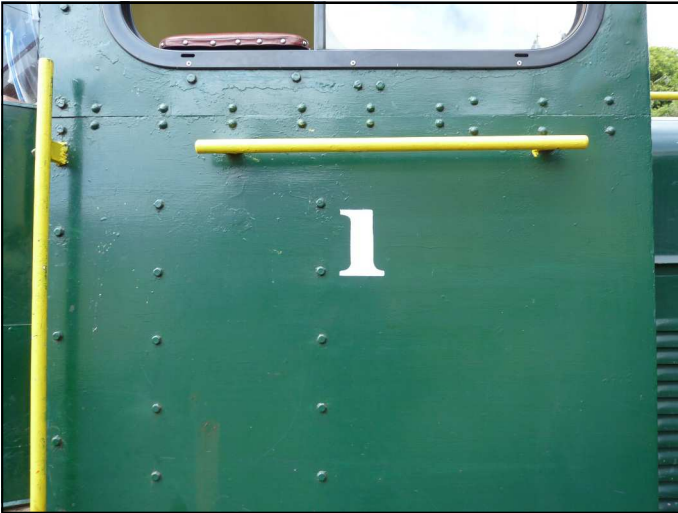
We have been given a screw air compressor. We hope to put it under the stairs up to the store above the workshop.

CAR PARK

A new layer of metal has been delivered for our car parks. The metal for the car park behind the Shanty is at the Junction but still has to be spread. The very wet weather and increased traffic has really turned the car parks into mud.

We have just received a notice about a tour to England for nearly all of July 2013 looking at various heritage sites around England. The cost Auckland to Auckland is \$12500 per person. Brochures are on the notice board in the station. The tour will be run by Calder & Lawson in Hamilton.

The Photo Gallery



Just as the carriages have received their new number plates, the Meremere diesels have had their respective numbers painted back on to the sides of their cabs. A nice touch indeed.



Here we have a guest photo by Chris Lucas, of a small DIY table seen in the shanty with the caption:

'An example of the high quality engineering products produced by the highly skilled artisans in the precision workshops of the Bush Tramway Club!'

Feel free to send in your own photo with a corresponding caption. The funnier the



The morning of the October Open Day once again saw the car park overflowing. It's great to see so many passengers, although it does rather strain the car park.

THE BUSH TRAMWAY CLUB INC.

ADDRESS
1153A Rotowaro Road
Box C10, Glen Afton
R D 1, Huntly 3771
New Zealand

WEBSITE
www.bushtramwayclub.com

EMAIL
secretary@bushtramwayclub.com

The Bush Tramway Club premises
Chairman Bruce McLuckie (Mobile)

PHONE
07 828 4851
027 480 2749

(outside New Zealand +64 7 828 4851)
(outside New Zealand +64 27 480 2749)

NEWSLETTER CONTRIBUTORS :

Colin Jenner, Colin Swabey, Elliot Baptist